



A.175 FE

HINGED WINDOWS SYSTEM

SPECIFICATION SHEET

etrusal[®]
Alumínio com perfil humano.

PRESENTATION

A.175 FE

BIM

DWG

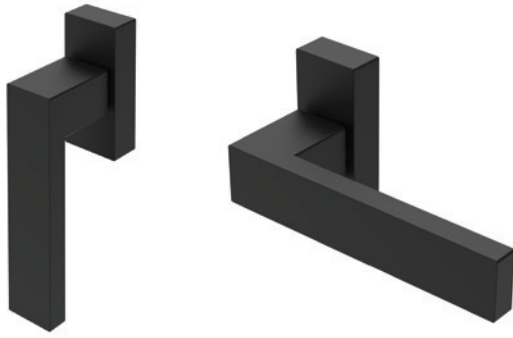
Efficient and aesthetically appealing window and door system.

The A.175 FE is designed with a revivalist line, combining minimalism with the style of classic steel windows.



A commitment between
innovation, functionality
and aesthetics.

ACCESSORIES ALUMINIUM



AXIS - NEW RANGE OF ALUMINIUM ACCESSORIES

CUSTOMIZABLE

finishing adapted to each project: color, texture and shine

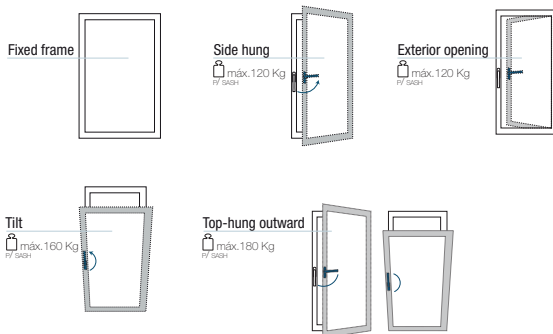
DURABLE

suitable selection of finishing (powder coating or anodised) to the type of exposure of the window: maritime proximity, polluted atmosphere, high sun exposure, others

SUSTAINABLE

aluminum components, 100% recyclable material

OPENING TYPOLOGIES



TECHNICAL DETAILS

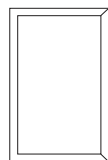
	Application	New construction / Renovation
	Maximum sash weight	180 kg (c/ oscilobatente)
	Maximum sash height	2700 mm
	Maximum sash width:	1400 mm
	Jamb view:	75,6 mm
	Glazing	42 mm

COEFFICIENT THERMAL TRANSMISSION U_w

CLASS



Window 2 Sashes
1200 mm x 2200 mm
Glass $U_g=0.9W/m^2K^{-1}$



Glass U_g 0.9 W/m^2K^{-1}

1.3

EN ISO 10077-2

1200 x 2200 mm

Glass U_g	Window U_w
1.1 W/m^2K^{-1}	1.4 W/m^2K^{-1}
1.0 W/m^2K^{-1}	1.4 W/m^2K^{-1}
0.9 W/m^2K^{-1}	1.3 W/m^2K^{-1}

INITIAL TYPE TESTING

Test bulletin: **CXL 092/23**. Notified entity **0856**

Dimension: 1600 mm x 2000 mm.

Windows made of two sashes: tilt&turn and side hung

AIR PERMEABILITY (pression máx. test / EN 12207)	Class 4
WATER PROOFING (EN 12208)	Class E900
WIND PRESSURE RESISTANCE (EN 12210)	Class C4

ACOUSTIC PERFORMANCE

38dB

SURFACE TREATMENT

Anodised

Finishing: Polished or satin

Licença Qualanod nº 1402, desde 1983

Powder Coating

Finishing: Matt, glossy, satin, metallic and/or textured

Licença Qualicoat nº 808, desde 1995

Wood Effect Decoration

Wood decoration finishing

ALUMINIUM PROFIS

ALLOY EN-AW 6060

EN 573-3 | EN 755-2

EPM T6

PA 6.6 GF 25

25% fiberglass

14.8 e 34 mm

$R_{p0.2} \geq 120$ MPa

$R_m \geq 160$ MPa

$A_{50mm} \geq 6\%$

Nominal Length: 6500 mm

Nominal Thickness: 1.5 mm



Extrusal[®]
Alumínio com perfil humano.

Rua do Sacobão - Aradas
3810 - 454 AVEIRO
Portugal

(+351) 234 378 900
info@extrusal.pt
www.extrusal.pt

